

**Woven Gold Acrylic  
(India) Pvt. Ltd.**

**HEAD OFFICE:** 414, Patparganj Industrial Area, Delhi 110092  
Ph.: 011-22146122, 22163153, 22163155. Fax: 011-22163154  
E-mail: wgtubs@gmail.com www.woven-gold.in

**DISPLAY CENTRES:**

**DELHI** : 414, Patparganj Industrial Area, Delhi-110092.  
Ph.: 011-22146122, 22163153, 22163155. Fax: 011-22163154

**AHMEDABAD** : 102-103 Iscon Plaza, Near Jodhpur Char Rasta, Satellite Road,  
Ahmedabad-380015. Ph.: 079-26926027, 09376444456

**MUMBAI** : Kheera Nagar Industrial Estate, F-5, 1st Floor, B.M. Bhargav Marg,  
Kheera Nagar, Santa Cruz (W), Off S.V. Road, Mumbai-400054  
Ph.: 09371206064

**BANGALORE** : No. 30/1st Cross, Sudhama Nagar, Bangalore-560027  
Ph.: 080-22862415, 41239721

**LUDHIANA** : 8, Friends Colony, Near G.R.D. Academy, Hambra Road, Ludhiana  
Ph.: 9316121279

**LUCKNOW** : Smile Ganj, Near Hotel Awadh International, Lucknow-227105  
Ph.: 09389076003

**DEHRADUN** : Anand Tower, New Cantt Road, Dehradun, Uttarakhand  
Ph.: 09358799398

**AREA REPRESENTATIVES:**

**Delhi** : 9312435710

**Rajasthan** : 9314511081

**Punjab** : 9316121279, 9356000318

**Gujarat** : 9376444456, 9328888324

**Karnataka** : 080-41239721

**Cochin** : 0484-4029494

**Tamil Nadu** : 9841200807

**Maharashtra** : 09371206064

**Uttar Pradesh** : 09389076003, 9868156016

**Uttarakhand** : 09358799398



# CONTENTS

Woven-Gold... orchestrating a musical .....	3
Escape to harmonic pleasures .....	5
Jazz.....	6
Swim Paradise.....	8
Caramenta .....	10
Affinity .....	12
Genesis .....	14
Sentorini .....	16
Unnamed .....	18
Lounger.....	20
Classic .....	22
Galaxy .....	24
Steam Room .....	26
Sauna Cabin.....	30
Chiller .....	32





## Woven-Gold... orchestrating a musical symphony in bathrooms.

An uncompromising vision and tryst with excellence has resulted in making Woven-Gold a name to reckon with in next generation bath tubs, shower systems and spas.

An ISO 9001:2000 certified company, Woven-Gold has continually invested in new ways to assure the best in product quality and customer service. That's why, the entire manufacturing process is carried out at our ultra-modern plant. It has a Customer Support Cell that boasts of a team of highly trained & qualified Electronic Engineers that responds to customers' complaints within 48 hours.

With hundreds of showers, tubs, or tub / shower combination units, and spas, Woven-Gold has what you need to fit any bathroom size and configuration.





## Escape to harmonic pleasures

When Mozart created a musical symphony, it left everyone mesmerised. Now Woven-Gold brings alive the same heavenly pleasure with its Spas. Discover how the symphonic interludes of water create a harmonious effect on your body and soul. Just think about "relaxing" with calming candlelight, soothing scents, and big, fluffy towels.

Our exclusive and extensive range of Spa Bath Systems are developed from years of research and experience, provide high performance, quiet operation, and have proven therapeutic benefits.





JAZZ

6  
7



Standard Features

Ozone Jet	:	1 pcs
Water pump (220V, 2HP)	:	2 pcs
Circulation Pump (220V, 1.5HP)	:	1 pc
Air Pump (220v, 1HP)	:	1 pc
SPA Light (LED)	:	1 pc
Filtration System	:	1 set
Heater (220V, 3KW)	:	1 pc
Computer Control Panel	:	1 pc
Pillows	:	3 pcs
Radio	:	1 pc
Skirting/Hem	:	1 set

Product Description

Size (mm)	Material		Acrylic Color		Seating (persons)	
					Lying	Seating
5850*2200*1100/1300	Acryl (Fibre Glass Reinforcement)		White, Ocean Blue, Tree Green, etc.		2	3-4
Capacity (Litres)	Weight (Kg.)		Voltage/ Frequency		Electric Power (AMPs)	Packing (CBM)
1500	Dry	Gross	-		-	5.79
Small Jets (1.5")	Hydro Jets			Ozone Jets	Steel Air Jets	Total Jets
	3"	4"	5"			
46	-	12	-	-	29	87



# SWIM PARADISE

8  
9



### Standard Features

Water Pump(220V-240V, 3HP)	:	1 set
Water Pump(220V-240V, 2HP)	:	2sets
Circulation Pump (220V-240V, 1.5HP)	:	2sets
1HP air blower	:	1 set
Heater (3KW)	:	2sets
Control System	:	2sets
Spa Lights	:	3 pcs
Water level lights	:	26 pcs
Pillow	:	4 pcs
Back-water Vale	:	5 pcs
drain on the hem	:	2pcs
Skirting/Hem	:	1 set

### Product Description

Size (mm)		Material		Acrylic Color	Seating (persons)	
					Lying	Seating
5850*2200*1100/1300		Acryl (Fibre Glass Reinforcement)		-	3	3

Capacity (Litres)	Weight (Kg.)		Voltage/ Frequency	Electric Power (AMPs)	Packing (CBM)
	Dry	Gross			
-	-	-	220V/240V/50-60Hz	62	-

Small Jets (1.5")	Hydro Jets			Ozone Jets	Steel Air Jets	Total Jets
	3"	4"	5"			
121	-	28	3	2	21	174



Set missing



CARAMENTA

10  
11



Standard Features

Water Pump(220V, 3HP)	:	1 pc
Water Pump(220V, 2HP)	:	1 pc
Circulation Pump (220V, 1.5HP)	:	1 pc
Air Pump (220V, 1HP)	:	1 pc
Heater (220V, 3KW)	:	1 pc
Ozonier	:	1 pc
SPA Light(LED)	:	1pc
Water level lights	:	12 pcs
Filtration System	:	1set
Computer Control Panel	:	1pc
Pillows	:	2pcs
Radio	:	1pc
Skirting/Hem	:	1 set

Product Description

Size (mm)		Material		Acrylic Color	Seating (persons)	
					Lying	Seating
4200*2200*1100/1300 5800x2200x1100/1300		Acryl (Fibre Glass Reinforcement)		White, Ocean Blue, Tree Green, etc	-	4
Capacity (Litres)	Weight (Kg.)		Voltage/ Frequency		Electric Power (AMPs)	Packing (CBM)
	Dry	Gross				
4500	-	800	-		-	13.8
Small Jets (1.5")	Hydro Jets			Ozone Jets	Steel Air Jets	Total Jets
	3"	4"	5"			
-	26	20	1	-	-	48



# AFFINITY

12  
13



### Standard Features

Water Pump(220V, 2HP)	:	2 pcs
Circulation Pump (220V, 1.5HP)	:	1 pc
Air Pump (220V, 1HP)	:	1 pc
Heater (220V, 3KW)	:	1 pc
Ozonier	:	1 pc
SPA Light(LED)	:	1pc
Filtration System	:	1set
Computer Control Panel	:	1pc
Pillows	:	3pcs
Skirting/Hem	:	1 set

### Product Description

Size (mm)		Material		Acrylic Color		Seating (persons)	
						Lying	Seating
2200*1550*880		Acryl (Fibre Glass Reinforcement)		White, Ocean Blue, Tree Green, etc		1	2
Capacity (Litres)		Weight (Kg.)		Voltage/ Frequency		Electric Power (AMPs)	
		Dry	Gross				
900		-	256	-		-	
Small Jets (1.5")		Hydro Jets			Ozone Jets	Steel Air Jets	Total Jets
		3"	4"	5"			
10		-	12	-	1	18	40





# GENESIS

14  
15



### Standard Features

Water Pump(220V, 2HP)	:	2 pcs
Circulation Pump (110V/220V, 1.5HP)	:	1 pc
Air Pump (220V, 1HP)	:	1 pc
Heater (220V, 3KW)	:	1 pc
Ozonier	:	1 pc
SPA Light(LED)	:	1 pc
Filtration System	:	1 set
Computer Control Panel	:	1 pc
Radio	:	1 pc
Skirting/Hem	:	1 set

### Product Description

Size (mm)	Material		Acrylic Color		Seating (persons)	
					Lying	Seating
2080*2080*880	Acryl (Fibre Glass Reinforcement)		White, Ocean Blue, Tree Green, etc		-	6
Capacity (Litres)	Weight (Kg.)		Voltage/ Frequency		Electric Power (AMPs)	Packing (CBM)
1200	Dry	Gross	-		-	4.66
Small Jets (1.5")	Hydro Jets			Ozone Jets	Steel Air Jets	Total Jets
	3"	4"	5"			
20	-	16	-	1	22	58



SENTORINI

16  
17



Standard Features

Water Pump(220V, 2HP)	:	2 pcs
Circulation Pump (220V, 1.5HP)	:	1 pc
Air Pump (220V, 1HP)	:	1 pc
Heater (220V, 3KW)	:	1 pc
Ozonier	:	1 pc
Underwater Light	:	1 pc
Filtration System	:	1 set
Computer Control Panel	:	1 pc
Radio	:	1 pc
Pillows	:	3 pcs
Headrest Pillow	:	3 pcs

Product Description

Size (mm)	Material		Acrylic Color		Seating (persons)	
					Lying	Seating
2500x2200x970	Acryl (Fibre Glass Reinforcement)		-		1	6
Water Capacity (Gal/CBM)	Weight (Kg.)		Voltage/ Frequency	Electric Power (AMPs)	Packing (CBM)	
	Dry	Gross				
3.54/1.61	320	450	220V/240V/50-60Hz	-	-	
Small Jets (1.5")	Hydro Jets			Ozone Jets	Steel Air Jets	Total Jets
	3"	4"	5"			
95	-	12	-	-	19	126





# CEZENNE

18  
19



### Standard Features

Water Pump(220V, 2HP)	:	2 pcs
Circulation Pump (220V, 1.5HP)	:	1 pc
Air Pump (220V, 1HP)	:	1 pc
Heater (220V, 3KW)	:	1 pc
Ozonier	:	1 pc
Underwater LED Light (7 colours)	:	1 pc
Drain	:	1 pc
Computer Control Panel	:	1 pc
Radio	:	1 pc
Pillows	:	4 pcs
Skirting/Hem	:	1 set

### Product Description

Size (mm)		Material		Acrylic Color	Seating (persons)	
					Lying	Seating
2500x2200x950		Acryl (Fibre Glass Reinforcement)		-	-	5

Capacity (Ltrs.)	Weight (Kg.)		Voltage/ Frequency	Electric Power (AMPs)	Packing (CBM)
	Dry	Gross			
-	-	-	220V/240V/50-60Hz	-	-

Small Jets (1.5")	Hydro Jets			Ozone Jets	Steel Air Jets	Total Jets
	3"	4"	5"			
71	-	12	-	1	25	108



# LOUNGER

20  
21



### Standard Features

Water Pump(220V, 2HP)	:	2 pcs
Circulation Pump (220V, 1.5HP)	:	1 pc
Air Pump (220V, 1HP)	:	1 pc
Heater (220V, 3KW)	:	1 pc
Ozonier	:	1 pc
Computer Control Panel	:	1 pc
Filtration System	:	1 set
Pillows	:	6 pcs
Skirting/Hem	:	1 set

### Product Description

Size (mm)		Material	Acrylic Color	Seating (persons)	
				Lying	Seating
2880x2200x980		Acryl (Fibre Glass Reinforcement)	Ocean Blue, White and other choices	-	5

Capacity (Ltrs.)	Weight (Kg.)		Voltage/ Frequency		Packing (CBM)
	Dry	Gross			
-	-	-	220V/240V/50-60Hz or 380V/50Hz or 2x110V/60Hz		

Small Jets (1.5")		Hydro Jets			Ozone Jets	Steel Air Jets	Total Jets
		3"	4"	5"			
93		-	-	-	-	15	108





# CLASSIC

22  
23



### Standard Features

Water Pump(220V, 2HP)	:	2 pcs
Circulation Pump (220V, 1.5HP)	:	1 pc
Air Pump (220V, 1HP)	:	1 pc
Heater (220V, 3KW)	:	1 pc
Ozonier	:	1 pc
Computer Control Panel	:	1 pc
Filtration System	:	1 set
Pillows	:	3 pcs
Skirting/Hem	:	1 set

### Product Description

Size (mm)		Material		Acrylic Color	Seating (persons)		
					Lying	Seating	
2400x2400x930		Acryl (Fibre Glass Reinforcement)		Ocean Blue, White and other choices	2	5	
Capacity (Ltrs.)	Weight (Kg.)		Voltage/ Frequency			Packing (CBM)	
	Dry	Gross					
-	-	-	220-240V/50-60Hz or 380V/50Hz or 2x110V/60Hz				
Small Jets (1.5")		Hydro Jets			Ozone Jets	Steel Air Jets	Total Jets
		3"	4"	5"			
106		-	4	-	-	31	141

Set missing



# GALAXY



### Standard Features

Water Pump(220V, 2HP)	:	2 pcs
Circulation Pump (220V, 1.5HP)	:	1 pc
Air Pump (220V, 1HP)	:	1 pc
Heater (220V, 3KW)	:	1 pc
Underwater LED Light	:	1 pc
Ozonier	:	1 pc
Computer Control Panel	:	1 pc
Filtration System	:	1 set
Pillows	:	4 pcs
Skirting/Hem	:	1 set

### Product Description

Size (mm)		Material		Acrylic Color	Seating (persons)	
					Lying	Seating
2300x2300x960		Acryl (Fibre Glass Reinforcement)		Ocean Blue, White and other choices	-	6

Capacity (Ltrs.)	Weight (Kg.)		Voltage/ Frequency			Packing (CBM)
	Dry	Gross				
-	-	-	220-240V/50-60Hz or 380V/50Hz or 2x110V/60Hz			

Small Jets (1.5")		Hydro Jets			Ozone Jets	Steel Air Jets	Total Jets
		3"	4"	5"			
59		-	10	-	1	19	88



# STEAM ROOM

## How a steam room benefits your skin, muscles, joint pain, stress levels, and more...

Steam baths are known for their relaxation and deep skin cleansing, but steam room benefits also include:

- Relief from muscle soreness
- Relief from stiff joints
- Immune system enhancement
- Lymph detoxification
- Blood circulation improvement
- Sinus congestion relief

## Regular use of a steam room can have a positive impact on your health and appearance.

### Respiratory Benefits

Both sauna and steam baths are therapeutic, but the high moisture content in a steam room is especially good for respiratory problems.

For generations, doctors have recommended breathing steam for all kinds of respiratory issues.

Steam baths have been proven to be effective for conditions such as asthma, bronchitis, sinusitis and allergies. Steam can help clear allergens and mucus from your lungs.

A steam room exposes you to a higher concentration of steam, making it more effective for providing relief from breathing problems.

Breathing passages are soothed because of increased moisture content in your lungs, throat and nose.

### Skin Benefits

Nothing is better for your skin than a heavy sweat. Dermatologists recognize the value of steam in creating a beautiful, healthy glow. Heavy sweating cleanses your skin more thoroughly than soap and water because it opens your pores and allows deep-seated grime and dead cells to be flushed out. This is one reason steam baths can be helpful for acne treatment and some other skin conditions.

Also, the heat causes an increase in blood circulation, bringing more oxygen and nutrients to your skin surface. Over time, this can help contribute to a healthy, glowing appearance.

### Pain Relief

Heat has been known to be effective against joint and muscular pain. It causes your blood vessels to expand, which increases blood circulation. As a result, more oxygen and nutrients can reach damaged parts of your body.

This has the double effect of temporarily reducing or stopping pain and increasing your body's healing rate.

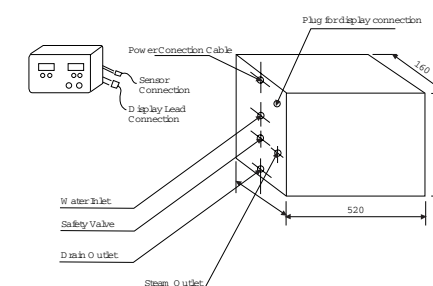
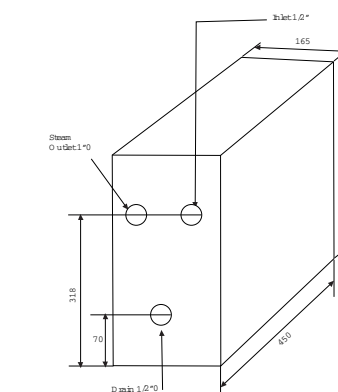
Spending 10 or 15 minutes in a steam room after exercise helps speed up healing of damaged muscle tissue.

### Stress Be Gone

We all know what stress can lead to... high blood pressure, cardiovascular disease, migraine headaches, muscle tension ...and the list goes on.

Relaxing in a steam room is a great way to unwind and relieve stress. The heat tells your muscles to relax, and the cloud of steam provides the perfect soothing atmosphere for calming your mind.

A steam bath before bed promotes deep, restful sleep which is so important for recharging your batteries and healing your body.



# STEAM GENERATOR

### Manual Steam Generator Features:

- Thermostat for heater protection.
- Allow 10 minutes generating steam.
- Water level sensor
- Solenoid valve for water filling.
- For drain use gate valve provided at the bottom side manually.

### Electronic Steam Generator Features:

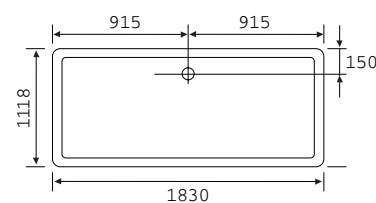
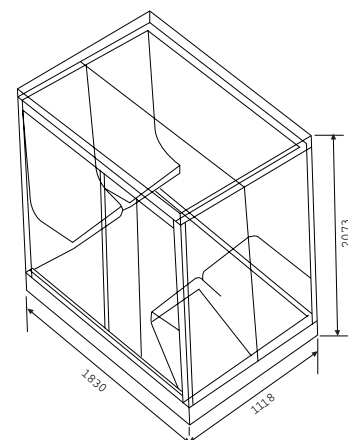
- Thermostatic protection for heater.
- Electronic solenoid valve for tank filling.
- Water level sensor for automatic cut of water supply.
- Gate valve for draining the unused water in the tank.
- Easy to use electronic key pad with temperature and time setting.





## CONCORD STEAM ROOM

CONCORD Steam Room is made of high quality special fiber and mixed chemical proof against crack. It can stand high temperature of 70°C over 120 hours and keeps original appearance without distortion and crack.



Steam Room (Concord)

No. of Persons	Room Size	Room Volume Outer (m <sup>3</sup> )	Capacity of Steam Generator (KW)
4	1120x1880x2075	4.24	4.5
6	1625x1830x2075	6.165	6.0
8	2135x1830x2075	8.096	9.0
10	2640x1830x2075	10.020	12.0



## SAUNA CABIN

### Benefits of Sauna

According to many health professionals, sauna benefits include...

- immune system strengthening
- improved blood circulation
- enhanced detoxification processes
- skin cleansing and rejuvenation
- tension and stress relief

Taking saunas can help you lose weight without effort and cure almost every health problem.

#### A sauna may help you detoxify

Raising your body's temperature helps it kill bacteria, fungi, parasites and viruses. Heating the body several degrees causes greatly increased circulation as the body attempts to maintain its basal temperature. This helps to dislodge toxins, especially from hard-to-reach areas such as teeth, bones and sinuses. Liver and kidney function may also improve by taking saunas.

#### A sauna can benefit your immune system

Your immune system is always active, but a fever causes it to kick in to high gear. What follows is an increase in

your body's production of disease fighting allies like white blood cells and antibodies.

#### Sauna benefits blood circulation

As your body increases sweat production to keep cool, your heart works harder pumping more blood at a greater rate. This actually provides many of the conditioning benefits of aerobic exercise. Saunas cannot replace exercise, but the heat does provide an environment that causes a profound cardiovascular response.

Good blood circulation helps transport nutrients throughout your body, eliminate toxins, improve heart, liver, and kidney function, improve virtually every function in your body. Good circulation is obviously crucial for us to stay healthy, right?

#### A sauna may improve your appearance

A heavy sauna induced sweat really helps cleanse and rejuvenate your skin - much more than just a bath or shower alone.

Sauna Room

No. of Persons	Room Size	Room Volume Outer (m <sup>3</sup> )	Capacity of Steam Generator (KW)
4	1500x1200x2100	3.80	4.5
6	1500x1800x2100	5.70	6.0
8	1800x2400x2100	9.00	9.0
10	2400x2400x2100	12.00	12.0

Steam Generator

Model No. Manual	Model No. Electronic	KW	Amps (for 240V/1PH)	Room Volume (m <sup>3</sup> )	Wire Size (mm)	Size of the Steam Box
SH 11 A	SH 11 B	4.0	6.0	4.0	3x1.5	540x260x210
SH 12 A	SH 12 B	6.0	9.0	6.0	3x2.5	585x410x255
SH 13 A	SH 13 B	9.0	13.5	9.0	3x2.5	585x410x255





Sauna\_Premium\_10001



Sauna\_Premium\_20001





Sauna\_Regular\_0001

# CHILLER

Size: 26"x18"x52". Tank Capacity: 150 lit

Tank: S.S.(material) Grade: 304



## Features:

- Frame of unit is made of S.S.
- Tank inner is made of 30420 swg S.S. sheet. Tank outer is made of 20222 swg S.S. sheet.
- The outer body is made of totally pre polished hairline finish with plastic coated.
- Unit is insulated with the liquid puff.
- The copper piping is used for cooling system inside the unit.
- The top opening door with lock is provided.
- The unit has one number of shields.
- Compressor make of KIRLOSKAR.
- The unit has the setting of timer, setting of temperature, the miniature current breaker, on/off system and the indication of inside water temperature.
- The unit has S.S. legs with adjustable feet.

